

# AUSTIN FARM

## Academy

### Newsletter 17/01/2025

Dear Parents/Carers,

Our week started with excitement - 2 events on one day! Please see below for the rest of their exciting learning this week.

Year 3 had an amazing day at Kent's Cavern in Torquay. The trip was linked to what they have been learning about rocks, and ancient civilisations. They looked at how the early settlers built their communities, and how they survived before the days of YouTube and McDonalds! They

had a tour around the caves (which were much larger than anticipated), found out about rock formations and how stalagmites and stalactites are formed. One of their favourite moments, if a little scary, was when all lights were turned off to allow them to see how dark the caves are! They had a wonderful time and learned a lot. As always, the children were well-behaved and a credit to the school.

Some year 5s and 6s had a fun and enjoyable Netball Fun Festival: they learnt lots of skills and at the end of their session, played a couple of friendly games. Some of them said it was the best day ever!

Today we had an education quality review by two members of the WeST central team with a focus on writing, Opening Worlds, EYFS and SEND. They were very impressed with the calm and purposeful atmosphere, as well as our friendly and polite children. Well done everyone for upholding our value of being respectful to each other.

I hope you have a lovely weekend.

Mrs Baptiste

Foundation/Year 1: This week we have been using different colours to represent the 4 seasons. We have started learning about the features of non-fiction texts and the difference between fact and opinion. In maths, Year 1 have been comparing numbers using 'more than and less than', whilst EYFS have been representing numbers to 10 with different manipulatives.



Year 2: Our art lesson this week was very messy! Instead of using paintbrushes we used cardboard scraps and instead of paint pallets, we used strips of cardboard. We each had three pieces of paper which we painted a primary colour using our scrapers. We then used a range of objects as tools to add patterns and shapes to our painted sheets. These included sponges, sticks, seeds, wooden knives, twine and leaves. We explored how secondary colours can be made by colour mixing. We worked considerately of others and made sure each tool was left with one primary colour so we could choose exactly which colours we wanted to mix.



Year 3: This week was an exciting week for our class as we had our school trip to Kent's Cavern. The children impressed the staff by how much they already knew and showed that they had retained lots of information about rocks and ancient civilisations. In art, we have started our new unit on expressive art and have been experimenting with primary colours. The class enjoyed using various tools to make patterns and shapes.

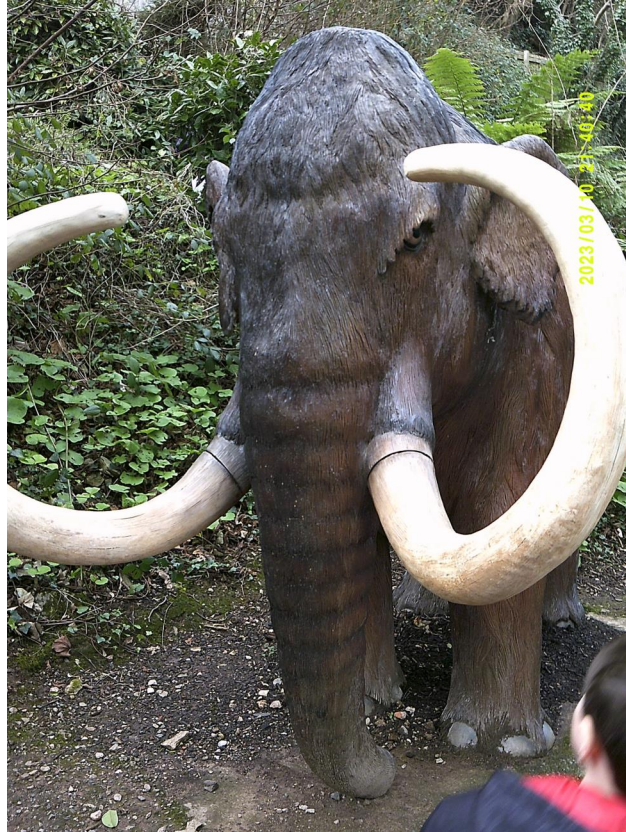






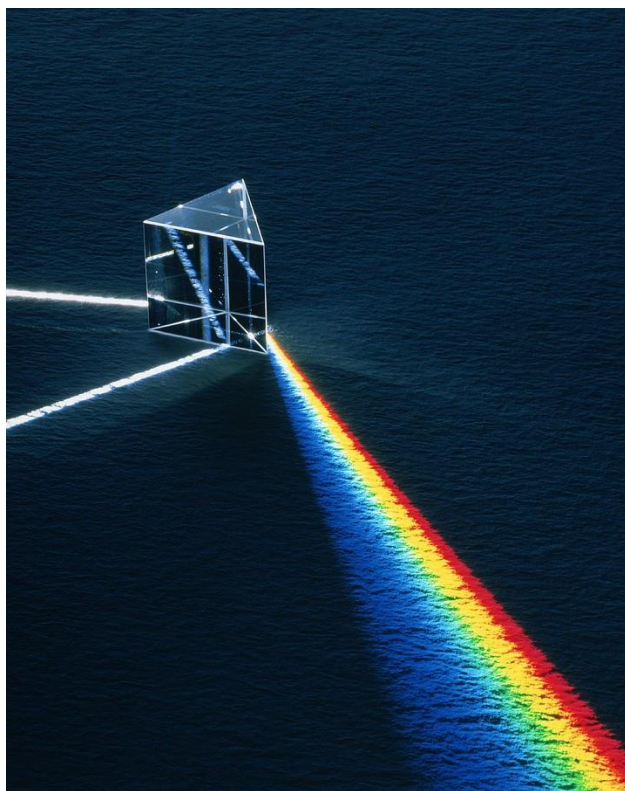






Year 4: This week we have been super scientists, kick starting our new unit on electricity. The children have been classifying appliances to determine whether they run on mains electricity or from a battery. In English we have been furthering our understanding of persuasive texts by learning about modal verbs.

Year 5/6: This week we really enjoyed our Science lesson focusing on how we see light and how it travels. We enjoyed experimenting to prove and find evidence to back up the fact that light travels in straight lines. In History, we enjoyed finding out about the different Celtic tribes and how they fought (or didn't fight) against the Romans as they conquered Britannia. In Year 6 Maths, we have been working with decimals and in Year 5, we have been persevering with long multiplication and started division - please continue to learn tables until you are fluently recalling them as this has proved a barrier for some of you.



*1 - A big well done to our learners of the week.*

**Foundation: G.Palnikov**

**Year 1: S.Tippett**

**Year 2: N.Sands**

**Year 3: L.Gilbery**

**Year 4: Z.Sheridan-Aston**

**Year 5: L.Cater**

**Year 6: K.McDonald**

## **Dates to remember!!!**

Spring term - Year 6 and Foundation Height and weight checks - Date TBC.

03/02/2025 - 07/02/2025 - Mental Health awareness week.

07/02/2025 - Mufti day to raise funds for Livewell (mental health support)

14/02/2025 - Last day of Spring 1 half term.

24/02/2025 - First day of Spring 2 half term.

## **Community Notices**



ESTOVER

# ROCK SOLID

FREE YOUTH CLUB FOR YEARS 5-8 MONDAYS 6pm-7.30  
CHRIST CHURCH ESTOVER PL6 8UE  
GAMES CRAFTS SNACKS & EXPLORE FAITH

Spring Term Dates  
13th Jan, 27th Jan, 10th Feb  
3rd March, 17th March, 31st March

 Plymouth YOUTH FOR CHRIST
  Forder Valley? MISSION COMMUNITY
 07356011844



**We are a warm, welcome space**

**Where** Christ Church Estover - Next to the Elm Centre PL6 8UE

**Opening times** Mondays 3-30-5:30  
Warm snacks & activities

Find more information and support at [plymouth.gov.uk/costofliving](http://plymouth.gov.uk/costofliving)




**Christ Church**  
ESTOVER

Does your child have sleep issues? Please follow this link for some useful information.

[Sleep Advice Service - Cerebra](#)

It also has booklets to download for anxiety and sensory processing.

Information on term time holidays from West Country Schools Trust.



**WESTCOUNTRY**  
SCHOOLS TRUST


## ATTENDANCE

## WHAT THE NEW RULES MEAN FOR ME

**1** I'm a single parent of one child and we want to go on holiday for a week.

Your holiday will not be authorised and you must talk to the school before you book anything. Because your child will miss 5 school days you will be given a penalty notice fine. The fine is £160 but if you pay it in 21 days it will be reduced to £80.

**£160**



**2** FOR EVERY CHILD A PENALTY IS GIVEN.

**IRREGULAR ATTENDANCE**  
**10 IN 10** **5**

If your child is absent for 10 or more sessions in 10 weeks and their absences are unauthorised. The school will consider prosecution.

**1** Day = **2** Sessions



+ £160 + £160 + £160 + £160  
**4 children & 1 parent = £640**  
Reduced to £320 if paid in 21 days

**3** FOR A FAMILY OF TWO PARENTS

+ £160 + £160 + £160 + £160

**4 children & 2 parents = £1280**  
Reduced to £640 if paid in 21 days



If in any period of not more than 3 years, your child has a 2nd and 3rd leave of absence or pattern of irregular attendance...


**4**

**2ND TIME**

2 parents and  
1 child = £320  
2 children = 640  
3 children = 960  
4 children = 1280

**3RD TIME**

A penalty notice fine will not be given. Instead, your case will be taken to court.  
A magistrate can fine each parent £2500 for each child  
**1 parent & 4 children = £10,000**  
**2 parents & 4 children = £20,000**



No discount for early payment

2 - Before you book your term time holiday, consider is it worth it? One of our families has been fined already this year, don't be the next one.

# WeST Term Dates 2024-2025

## WeST Term Dates 2024 to 2025

Agreed for wider distribution

Aug 2024							Sep 2024							Oct 2024						
M	T	W	T	F	S	S	M	T	W	T	F	S	S	M	T	W	T	F	S	S
			1	2	3	4							1		1	2	3	4	5	6
5	6	7	8	9	10	11	2	3	4	5	6	7	8	7	8	9	10	11	12	13
12	13	14	15	16	17	18	9	10	11	12	13	14	15	14	15	16	17	18	19	20
19	20	21	22	23	24	25	16	17	18	19	20	21	22	21	22	23	24	25	26	27
26	27	28	29	30	31		23	24	25	26	27	28	29	28	29	30	31			
							30													

Nov 2024							Dec 2024							Jan 2025						
M	T	W	T	F	S	S	M	T	W	T	F	S	S	M	T	W	T	F	S	S
			1	2	3							1			1	2	3	4	5	
4	5	6	7	8	9	10	2	3	4	5	6	7	8	6	7	8	9	10	11	12
11	12	13	14	15	16	17	9	10	11	12	13	14	15	13	14	15	16	17	18	19
18	19	20	21	22	23	24	16	17	18	19	20	21	22	20	21	22	23	24	25	26
25	26	27	28	29	30		23	24	25	26	27	28	29	27	28	29	30	31		
							30	31												

Feb 2025							Mar 2025							Apr 2025						
M	T	W	T	F	S	S	M	T	W	T	F	S	S	M	T	W	T	F	S	S
				1	2						1	2			1	2	3	4	5	6
3	4	5	6	7	8	9	3	4	5	6	7	8	9	7	8	9	10	11	12	13
10	11	12	13	14	15	16	10	11	12	13	14	15	16	14	15	16	17	18	19	20
17	18	19	20	21	22	23	17	18	19	20	21	22	23	21	22	23	24	25	26	27
24	25	26	27	28			24	25	26	27	28	29	30	28	29	30				
							31													

May 2025							Jun 2025							Jul 2025						
M	T	W	T	F	S	S	M	T	W	T	F	S	S	M	T	W	T	F	S	S
			1	2	3	4						1			1	2	3	4	5	6
5	6	7	8	9	10	11	2	3	4	5	6	7	8	7	8	9	10	11	12	13
12	13	14	15	16	17	18	9	10	11	12	13	14	15	14	15	16	17	18	19	20
19	20	21	22	23	24	25	16	17	18	19	20	21	22	21	22	23	24	25	26	27
26	27	28	29	30	31		23	24	25	26	27	28	29	28	29	30	31			
							30													

Key: Peach - holiday periods; light green - weekends; blue - Trust NPD; yellow - School NPD

### Important dates

Autumn Term Dates: Monday 2 September to Friday 25 October, then Monday 4 November to Friday 20 December

Term 1: 40 days (inc. School NPD Mon 2 Sept and WeST NPD Tues 3 Sept)

Term 2: 35 days

Spring Term Dates: Monday 6 January to Friday 14 February, then Monday 24 February to Friday 4 April

Term 3: 30 days (inc. School NPD Monday 6 January)

Term 4: 30 days

Summer Term Dates: Tuesday 22 April to Friday 23 May, then Monday 2 June to Tuesday 22 July (Note: NPDs on Mo 21 and Tu 22 Jul '25 are

disaggregated for staff twilight training throughout the year. The last day of the academic year for students and staff is Friday 18 July 2025)

Term 5: 23 days

Term 6: 37 days

# WeST Term Dates 2025-2026

WeST Term Dates 2025-2026

Aug 2025							Sep 2025							Oct 2025						
M	T	W	T	F	S	S	M	T	W	T	F	S	S	M	T	W	T	F	S	S
				1	2	3	1	2	3	4	5	6	7	6	7	8	9	10	11	12
4	5	6	7	8	9	10	8	9	10	11	12	13	14	13	14	15	16	17	18	19
11	12	13	14	15	16	17	15	16	17	18	19	20	21	20	21	22	23	24	25	26
18	19	20	21	22	23	24	22	23	24	25	26	27	28	27	28	29	30	31		
25	26	27	28	29	30		29	30												

Nov 2025							Dec 2025							Jan 2026						
M	T	W	T	F	S	S	M	T	W	T	F	S	S	M	T	W	T	F	S	S
				1	2		1	2	3	4	5	6	7	5	6	7	8	9	10	11
3	4	5	6	7	8	9	8	9	10	11	12	13	14	12	13	14	15	16	17	18
10	11	12	13	14	15	16	15	16	17	18	19	20	21	19	20	21	22	23	24	25
17	18	19	20	21	22	23	22	23	24	25	26	27	28	26	27	28	29	30		
24	25	26	27	28	29	29	29	30	31											

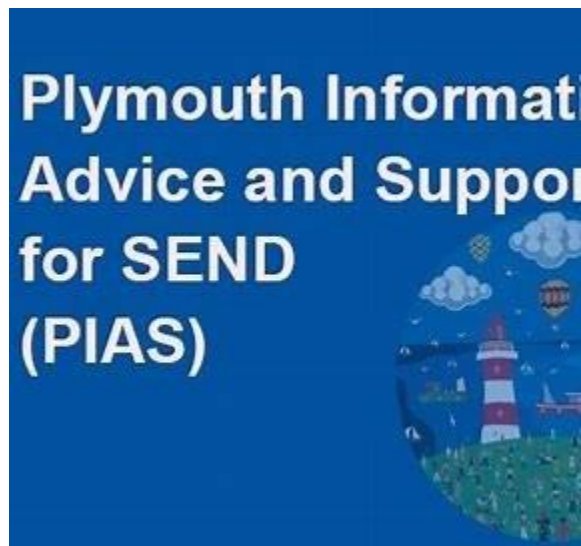
  

Feb 2026							Mar 2026							Apr 2026						
M	T	W	T	F	S	S	M	T	W	T	F	S	S	M	T	W	T	F	S	S
					1						1		6	7	8	9	10	11	12	
2	3	4	5	6	7	8	2	3	4	5	6	7	8	13	14	15	16	17	18	19
9	10	11	12	13	14	15	9	10	11	12	13	14	15	20	21	22	23	24	25	26
16	17	18	19	20	21	22	16	17	18	19	20	21	22	27	28	29	30			
23	24	25	26	27	28		23	24	25	26	27	28	29							
							30	31												

May 2026							Jun 2026							Jul 2026						
M	T	W	T	F	S	S	M	T	W	T	F	S	S	M	T	W	T	F	S	S
				1	2	3	1	2	3	4	5	6	7	6	7	8	9	10	11	12
4	5	6	7	8	9	10	8	9	10	11	12	13	14	13	14	15	16	17	18	19
11	12	13	14	15	16	17	15	16	17	18	19	20	21	20	21	22	23	24	25	26
18	19	20	21	22	23	24	22	23	24	25	26	27	28	27	28	29	30	31		
25	26	27	28	29	30	31	29	30												

Key	
<span style="background-color: #e0f0ff; border: 1px solid black; display: inline-block; width: 15px; height: 10px;"></span>	Holiday periods
<span style="background-color: #ffe0e0; border: 1px solid black; display: inline-block; width: 15px; height: 10px;"></span>	Bank holidays
<span style="background-color: #e0ffe0; border: 1px solid black; display: inline-block; width: 15px; height: 10px;"></span>	Weekends
<span style="background-color: #e0e0ff; border: 1px solid black; display: inline-block; width: 15px; height: 10px;"></span>	Trust NPDs
<span style="background-color: #ffe0e0; border: 1px solid black; display: inline-block; width: 15px; height: 10px;"></span>	School NPDs



[Plymouth Information Advice and Support for SEND. - Supplying you with information, advice and support \(plymouthias.org.uk\)](http://plymouthias.org.uk)