

AUSTIN FARM

Academy

Newsletter 27/04/2023

Dear parents and carers

Welcome back! I hope you all had lovely Easter breaks. It has been great to see the children's smiling faces and some sunny weather! This week the children have been busy working hard and getting back into school routines, please see below for their class learning. Behind the scenes, our KS2 teachers have been learning too! They attended training on our new KS2 History, Geography and RE curriculum that will be launched in September, this is a very exciting development for us as a school and I will keep you updated throughout this term as the training progresses.

Strike days: As you may be aware there are two more days of strike action by the NEU. Teachers do not have to let me know if they are planning on taking strike action, however, the teachers here have indicated to me their current intentions. Thursday 27th April - School will be **closed to year 2 and year 3 all day**. School will be open to all other classes. Tuesday 2nd May - School will be open to all classes. However, please understand that this could change and if it does, I will let you know as soon as I can.

I hope you have a lovely weekend,

Mrs Baptiste

Foundation: we have been exploring our new book called *The Extraordinary Gardener*. In this beautiful story a boy called Joe creates a wonderful garden that he shares with everybody. We have also been observing the signs of spring in our seasonal welly walk and observed some newts from our school pond. In Maths we have been counting to 10 and counting on accurately through games like hopscotch. In Jigsaw we have talked about our families, looked at our family photos and talked about the jobs that we do in our families like making our beds or washing dishes.



Year 1: have started their new topic of toys and shared some of the lovely homework they had done over the Easter break about toys from the 1960's. We also planted our bean seeds and will be watching them grow over the term.



Year 2: the children have been working hard on their calculation strategies in maths and have been learning about how to search safely for information on the internet.



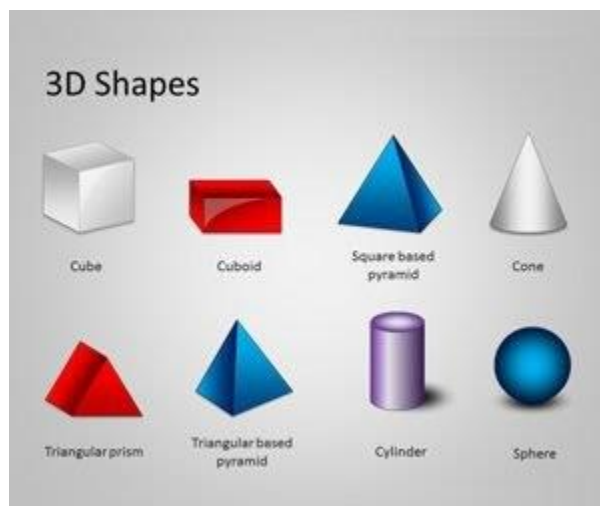
Year 3/4: we started our new topic in Geography on rainforests. In our first lesson, we used atlases to locate countries that have rainforests and compared their location to that of the UK. After this, we researched facts about a chosen rainforest and wrote a description using the facts we had learned. It was super start to the unit.



Year 5: in Science this week, we have been learning about plant reproduction in our new unit about living things. In English, we are sharing the book by Claire and Michael Morpurgo called "Where My Wellies Take Me!" This will help us to write our own recount about a walk in our local area. In our new Geography unit, we will be learning about the needs of our planet and how natural resources can conserved.



Year 6: this week, we have been looking at a range of different Maths skills ranging from nets of 3D shapes to translating and reflecting shapes in four quadrants by using our co-ordinates knowledge. We started our new topic of living things and their habitats by the class classifying animals.



Learners of the week, well done everyone !!

Foundation:

Year 1: L.McCoulough

Year 2: L.Borda

Year 3: L.Gray

Year 4:

Year 5: K.Millar

Year 6: K.Pinhey



This week's attendance winners are...

Year 1, getting a 97% attendance this week.



Dates to remember!!!



May - Class Photo's - More details to follow.

Sports Day !!



Sports day has been preliminary booked for Monday 19th June 2023. Please note, this date is weather dependent.

Dinner Menu w/b 24/04/2023 - Week menu 2

School packed lunches will available in the new term.

JACKET POTATOES

Jacket potatoes with a choice of fillings

Cheese Tuna (with Mayo/mayonaisse)

Beans Coleslaw (with Mayo/mayonaisse)

Brown bread or Tortilla wrap with a choice of fillings

Cheese Tuna (with Mayo/mayonaisse)

Horn

Dessert of the day, fresh fruit or yoghurt

PAYMENT OF SCHOOL DINNERS

All Dinner money is paid via ParentPay. We do ask that you could please keep your balance in credit.

K31 children are entitled to UIFSM
K32 children only £2.20 per meal

Do I qualify for Free School Meals?

If you receive ONE of the following benefits then you will be entitled to Free School Meals:

- Income support
- Employment and Support Allowance
- Child Tax Credit without Working Tax Credit with an annual taxable income (as assessed by the HMRC) of less than £16,190
- Income based Job Seeker's Allowance (IBJA)
- Guaranteed Element of State Pension Credit
- Universal Credit - from April 2018 provided you have an annual net earned income of no more than £2400 as assessed by earnings from up to three of your most recent assessment periods

PLEASE NOTE: Eligibility for FSM cannot be determined until you have received your first Universal Credit statement or entitlement letter. We have been informed by DWP that they may take up to six weeks to process your first/new claim.

* Support under Part V1 of the Immigration and Asylum Act 1999

Please call 01752 705367 or email admin@autisfarm.org.uk for more information

KEY TO ALLERGENS

Refuel

AUSTIN FARM ACADEMY

WEEK 2

MONDAY	TUESDAY	WEDNESDAY	THURSDAY	FRIDAY
Chilli	Various Pizzas with diced potatoes	Chicken Curry with naan bread	Roast Chicken with Yorkshire pudding, roast potatoes, veg and gravy	Breaded fish with chips or pasta
Cheesy Wheels with herb wedges	Spanish Omelette with diced potatoes	Roasted Vegetable Fajita	Macaroni Cheese with garlic bread	Vegetarian Korma with rice and naan bread
Fruit Muffins	Chocolate Crisps	Shortbread with fruit pieces	Carrot Cake	Custard Biscuits

EVERY DAY

Jacket Potato, School Packed Lunch, Salad Bar, yoghurt and fresh fruit available daily

All items listed may contain allergens!

FREE NSPCC Online Safety Workshops for Parents & Carers



The NSPCC is running a series of free **Online Safety Workshops for Parents & Carers**.

Core Content - The workshops are 1 hour and will help parents and carers to find out about:

- What children and young people are doing online
- Parental concerns

- What the risks are for young people in terms of what they see, do, and who they meet online
- How to manage these risks as a parent/carer
- Sources of help and support

Each workshop will also focus on a combination of the following topics:

- Gaming
- Social Media
- Online Bullying
- Parental controls
- Mental health and well being
- Modelling good behavior
- Online challenges, hoaxes and scams
- Persuasive design and screen time vs screen use

We would encourage that a lead professional from your setting is present on the training, so that you are aware of any concerns and can follow up appropriately. You will also benefit from hearing the same key messages as your parent/carer community. However, this isn't mandatory.

For more information and to request joining details please email parentworkshops@nspcc.org.uk

Date	Time	Content
22 March	6-7pm	Core + Social Media + Mental Wellbeing + Online Bullying
28 March	6-7pm	Core + Gaming + Social Media + Online Friendships
5 April	4-5pm	Core + Gaming + Social Media + Bullying + Parental Controls
11 April	7-8pm	Core + Online bullying, social media +modelling good behaviour
19 April	6-7pm	Core + Social Media + Parental Controls
25 April	4-5pm	Core + gaming, parental controls & bullying

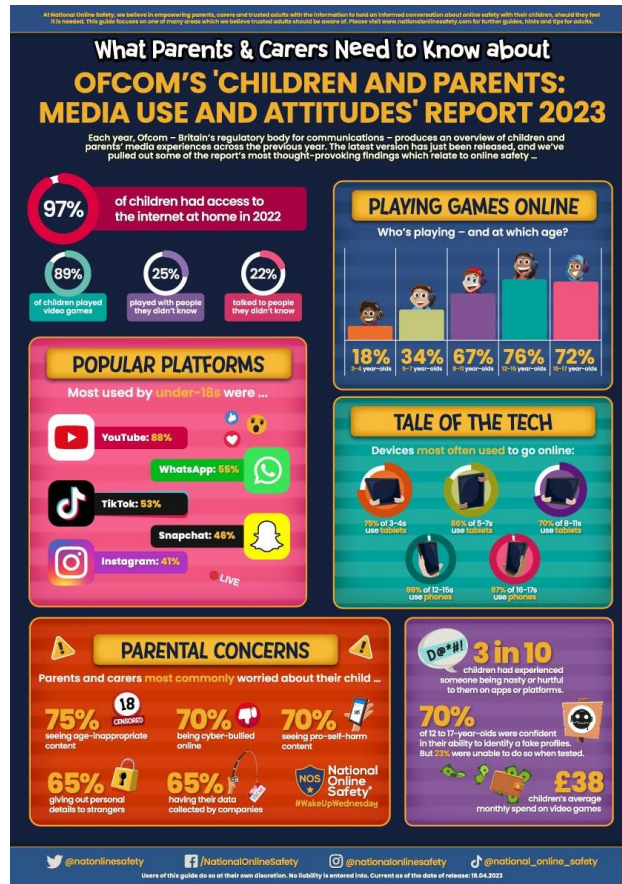
Activities & Events for SEND: Spring 2023



[Plymouth Information Advice and Support for SEND. - Supplying you with information, advice and support \(plymouthias.org.uk\)](https://plymouthias.org.uk)

[Introduction to PIAS - YouTube](#)

Staying safe online



Attendance.

Every moment in school counts, and days missed add up quickly. The higher a child's attendance, the more they are likely to learn, and the better they are likely to perform in exams and formal assessments. We are implementing new procedures to help parents get their children to school.

Do you know your child's attendance ?

95% Attendance - 2 whole weeks of school missed.

90% Attendance - 4 whole weeks of school missed.

85% Attendance - 6 whole weeks of school missed.

80% Attendance - 8 whole weeks of school missed.

75% Attendance - 9 plus whole weeks of school missed.

